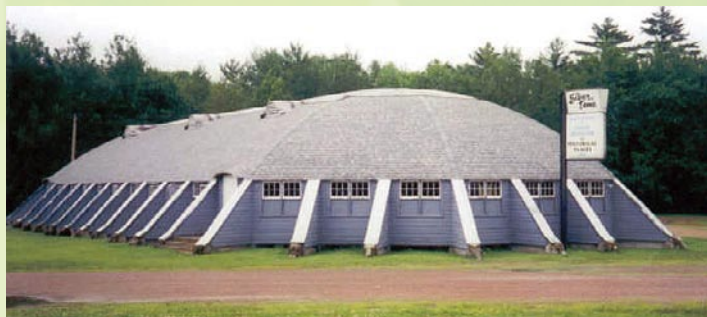


Historical Sites & Museums (See map, pages 28-29)

Silver Dome Ballroom (F-2)



Located 5 miles west of Neillsville on Hwy. 10, the Silver Dome Ballroom is listed in the National and State Registers of Historic Places for its unique architecture and its rich entertainment history. Built during the Great Depression and operating since 1933, the Silver Dome features many original or long-time decorations and fixtures, a floating, maple dance floor, and a beautiful, arching Lamella truss design. Many famous entertainers have appeared at the Silver Dome, including: Count Basie, Duke Ellington, The Grassroots, Tommy James & The Shondells, Herman's Hermits, George Jones, Pee Wee King, Johnny Paycheck and Six Fat Dutchman.

Rural Arts Museum (O-3)



On the north end of Colby, along a spur of railroad that brought civilization to the territory, is a collection of buildings filled with stories, artifacts, and memories of middle Wisconsin.

The Rural Arts Museum is home to the original Colby Train Depot, built in 1872, and moved to the site in 1972. The history of the railroad is complemented by dairy industry memorabilia. A 1-room country school was added and is fully furnished, including an extensive book collection. It helps recall how knowledge was shared in the days past. The jewel of the Rural Arts Museum is the Schopper Log Home (disassembled and reconstructed on site by members of the Schopper family). It is completely furnished with original furniture and lovingly cared for by the family. The Heritage Building is a new building and was constructed to complement the existing structures. It was built to feature a historical rural main street and for display of artifacts. It will also house the Rural Arts Museum office and proper storage and restoration areas.

The Rural Arts Museum is operated by volunteers and benefactors and is open on Sundays from 1-4 p.m., from Memorial Day to Labor Day and also by appointment. For more information, call 715-223-3259, or contact the Rural Arts Museum at P.O. Box 73, Colby, WI 54421.

Visit us in Hatfield!

RECREATION SPECIALISTS
Waterfront, Hunting Parcels,
Lots, Cabins & Homes

 **ClearView**
REALTY (715) 333-8439
(877) 284-8439

N9536 Cardinal Ln. Hatfield, WI 54754
www.clearviewrealty.com

- FiberNet Wireless High Speed Internet Services
- Whole House & Business Audio Systems
- Home & Business Automation Systems
- Home Theater Installation & Design
- New Construction & Retrofit Wiring
- HDTV Digital Antenna Systems
- Security Systems & Cameras
- Distributed Video Systems
- Dish Network Satellite
- Computer Networking
- Lighting Control
- Phone Systems
- Access Control

SELKO
ELECTRONICS
In Business Since 1982

Call Today! 1-800-257-7667
N5720 Oak St. • Chili, WI 54420

LAKE ARBUTUS MOTORSPORTS

- ATV, Jet Ski, & Pontoon Rentals
- Used Inventory
- Parts & Accessories

10 miles outside of Black River Falls
117 Cty. Rd. J
Hatfield, WI 54754
715-333-8600

*OPEN 7 DAYS/WEEK
IN SUMMER!*



www.lakearbutusmotorsports.com

(See map, pages 28-29)

Historical Sites & Museums

WCCN's Wisconsin Pavilion of the 1964-1965 New York World's Fair (I-12)



A landmark of the Neillsville community for over five decades, WCCN's Wisconsin Pavilion originally served as the main entrance and basic exhibit for the State of Wisconsin at the 1964 and 1965 New York World's Fair in Flushing Meadow. Discover the story behind the Wisconsin exhibit at the Fair when you visit the Pavilion. Inside the Pavilion you will find central studios for three radio stations; 107.5FM WCCN "The Rock", 1370AM WCCN "Timeless" and 92.7FM WPKG "Today's Best Hits", and Pavilion Cheese & Gifts. At Pavilion Cheese and Gifts you will find an assortment of exceptional artisan and specialty cheese. Find boutique wine carefully selected from around the world including Munson Bridge Wine crafted right here in Clark County. Enjoy delicious treats like cranberry pancake mix and cranberry syrup, fudge, beer cheese soup, Door County caramel corn, maple syrup and honey -- all created in Wisconsin. Browse through Wisconsin keepsakes, sweatshirts, T-shirts or choose a Wisconsin custom-made basket full of Wisconsin creations. On the lower level of the Pavilion, you can view a private collection of New York World's Fair memorabilia, and outside, listen to Chatty Belle, the World's Largest Talking Cow, who stands 16 feet high at the shoulders and is 20 feet long.

Branstiter Old Streets of Greenwood Museum (I-7)



Visitors to the Museum will take a step back in time as they walk along wooden sidewalks passing 17 store fronts of early

1900 Greenwood businesses, along with a church entrance. See a collection of over 400 items which include both tools and equipment used in the early dairying and lumbering days, along with over 170 photographs of early Greenwood depicting people, places and events.

Visitors will enjoy an antique miniature car collection consisting of 38 cars and a coin collection with coins dating back to 1934. Another speciality includes a collection of 238 toy tractors from 11 different manufacturers. A stamp collection is also available for viewing.

The Museum is located at 600 South Main Street on the south edge of Greenwood and is available for touring. Special appointments for events such as reunions, tours, and school groups are available. Call the Greenwood city clerk at 715-267-6205.

Tufts' Mansion (I-12)



In 1885, Emery Bruley built the original Tufts' House in Neillsville. The house as it stands today reflects the changes of that period, as well as the personalities of each succeeding generation of owners. In 1886, the Bruley family exchanged houses with the Richard Dewhurst family. During this time the house took on a Victorian appearance. At Mr. Dewhurst's death in 1895, his daughter Mary and her husband, Wallace Hemphill, became the new owners. Reportedly, Marshall Fields did the interior decorating for their daughter's wedding in 1916. Mr. and Mrs. Robert Stoll then owned the house until 1961, when it was purchased by Colonel and Mrs. William B. Tufts, who did extensive remodeling. After their death, the home was given to the city for use as a museum. In 1996, the museum was purchased by Joseph and Stacie Boe. They restored much of the home's original charm. In the spring of 2004, they sold the mansion to James and Dawn Voss who opened Tufts' Mansion Bed and Breakfast. Tufts' Museum is open for tours in summer, Sundays, 1-4 p.m. or anytime by appointment. Call 715-743-3346 or visit them on the Web at www.tuftsmansion.com.

www.clark-cty-wi.org
1-888-CLARK-WI

Historical Sites & Museums (See map, pages 28-29)

Reed School (I-12)



This one-room schoolhouse serves as the Wisconsin Historical Society's 10th historic site. Reed School has been restored to its 1915 appearance with a mission of interpreting life in a one-room school, something that was once a matter of course in this state. Admission is free and it is open to the public weekends from May

through October. School and group tours (free) are available year-round by reservation.

Reed School is located along U.S. Hwy. 10 about 2 miles east of Neillsville. For more information about the restoration of Reed School, call 608-253-3523 or e-mail reedschool@wisconsinhistory.org.

1897 Clark County Jail Museum (I-12)



Visit the Historic 1897 Clark County Jail Museum and take a memorable trip back in time.

Placed on the National and Wisconsin Historic Registers in 1978, this one-of-a-kind building is noted for its "castle-like" appearance, complete with turrets and a formidable three-story fortress-like architecture.

As you walk through the front door of the 1897 Clark County Jail Museum, you enter the residence portion of the building. Each sheriff and his family lived in this beautiful two-story Victorian home during each term of office. The period furniture, ornate staircase, formal parlor with original Italian marble fireplace, and original virgin pine woodwork are highlights of the residence. Each room of the Victorian home features a collection of items unique to the time period and to Clark County. A children's bedroom, an authentic jewelry store, the Listeman family music room, and a room used for various rotation displays are just a few of the treasures that you'll want to browse through.

The jail portion of the museum houses old law enforcement equipment, and two floors of six cell blocks. Each cell block features a glimpse back in time to such places as the Barber Shop, the Mercantile, the Doctor's office, and rural school house. The final floor houses our extensive display of flags and military artifacts and uniforms from the Civil War to present day.

Join us for our next tour! Open each Sunday from 1-4 p.m. (Memorial Day through Labor Day). Bus tours and/or other group tours are available by appointment. Call the Neillsville Area Chamber of Commerce at 715-743-6444 for information.

Owen...you're always welcome here!

Nearly 100 years ago, travelers wandered the streets of Owen and were undoubtedly smitten with its unmistakable charm. Nestled conveniently on Highway 29 and the Historic Yellowstone Trail, the City of Owen offers a variety of relaxing things to do. One can easily be in the center of everything and get away from it all at the same time.

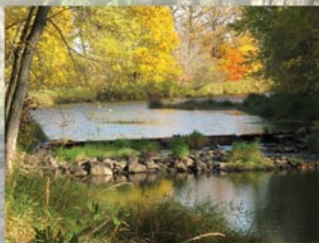
Our friendly people are our greatest asset. We are small in size but with a big heart, inviting all to come visit us for a moment, a day, or a lifetime.

Consider building a home in Countryside Estates or moving your business to one of the available lots in our many business parks.

The East Side Industrial Park already has sewer and water service available. This industrial park houses Victory Medical Clinic and has approximately 6.5 acres still available. The City is also developing two new parks on its east side.

The East Side Commercial Park and Central Wisconsin Agribusiness Park are located near Highway 29 access. The Commercial Park consists of 38 acres available for commercial/retail development and the Agribusiness Park consists of 71 acres devoted to ventures related to agribusiness and bioenergy. Infrastructure will be added to both of these parks in the near future.

Our central location between Minneapolis/Green Bay and Eau Claire/Wausau make Owen an affordable and logical setting for your business. For more info, call City Hall at 715-229-2404 or access information on our website at www.cityofowen.com or e-mail: owenclerk@charterinternet.com



CALENDAR:

- O-W Lions Ice Fishing Contest: 1st weekend in March
- Fire Dept. Annual Chicken Dinner & Open House: Mother's Day
- Farmers Market: Saturday mornings, Old School lawn during growing season
- Owen Jr. Fair & City-wide Garage Sales: 2nd weekend in July
- Old School Marketplace: 2nd weekend in July

(See map, pages 28-29)

Historical Sites & Museums

Thorp Area Historical Society Museum (D-2)

The Thorp Area Historical Society Museum collects and displays history, genealogies, and artifacts of the area and world which have affected the local way of life. The museum also has a growing collection of early period farm equipment, machinery, clothing, household items, books and war memorabilia. The museum will be relocating into the city of Thorp in 2010. Check Web site for updates: www.thorpchamber.com.

Loyal Area Historical Society (K-8)



The Loyal Area Historical Society has three museum buildings on their site at 501 E. Elm Drive on Hwy 98 as you enter Loyal from the east. There is a replica of the Soo Line Railroad Station and a replica of a 1940 era gas station which was located on Main Street in Loyal. The third building is in the process of being renovated and has the appearance of three separate buildings from the outside. Some displays will be moved into this space upon the completion of the renovations.

Housed in the depot and gas station museums are many photographs and artifacts of earlier days, as well as a great deal of railroad history and artifacts. We also have two quilts on display that were made in the late 1800's. A visit to our museums is an interesting photo trip into the past that is especially enjoyed by former residents. We welcome any photographs or artifacts from the past that donors would like to donate or share with us.

We are open the second Sunday of September, and on Corn Fest Sunday, and are always available on request for private tours of individuals or groups. For further information contact Dorothy Voit, Treasurer, at 715-255-8124 or Diana Schuette, President, N11398 Co. Rd. Q, Spencer, WI 54479, phone 715-223-2832.

Open for motorcoach tours. Donations are always welcomed.

Stanley Area Historical Society Museum



The Stanley Area Historical Society Museum is located at 228 Helgerson Street in Stanley. The extensive collections include exhibits on the Northwestern Lumber Company, music, churches, toys, military education, wildlife, industries and businesses, logging, farming and carpenter and blacksmith tools. The most recent addition to the museum is a 1906 Cadillac in pristine condition. Call 715-644-5880 or 715-644-0464.

www.clark-cty-wi.org
1-888-CLARK-WI

Rod & Staff Publishers
The place for serious believers
and those desiring to learn about God

Stop in and browse school curriculum that acknowledges the Creator God, used successfully by many for years. We have character-building story books and doctrinal books that teach God's truth for our times and Gospel tracts on many subjects.

W6053 County Road X, Withee, WI 54498
p. 715-229-9400 • f. 715-229-2240